



THE SHADE STORE WIRELESS LINK OVERVIEW

Integration supports discrete window treatment control and features a two-way communication system that offers real-time window treatment position and battery level status. The hub supports ethernet cable (CAT 5) and wireless communication (2.4GHz) for home automation integration, using the RJ45 port conveniently located on the back of the hub. Each hub can support the integration of up to 30 window treatments.

OVERVIEW

Control4 Version Required: 2.9.0 minimum

Developer: annex4

Initial Release Date: 5/28/2019

Last Modified Date: 5/28/2019

Support Email: automate@rolleasacmeda.com

Note: For support of real-time updates the annex4 Link driver is required. [Click here](#) to find the driver.

HARDWARE INSTALLATION

- Install all window treatments at desired locations
- Connect the hub to The Shade Store V2 app
- Connect all window treatments to The Shade Store V2 app

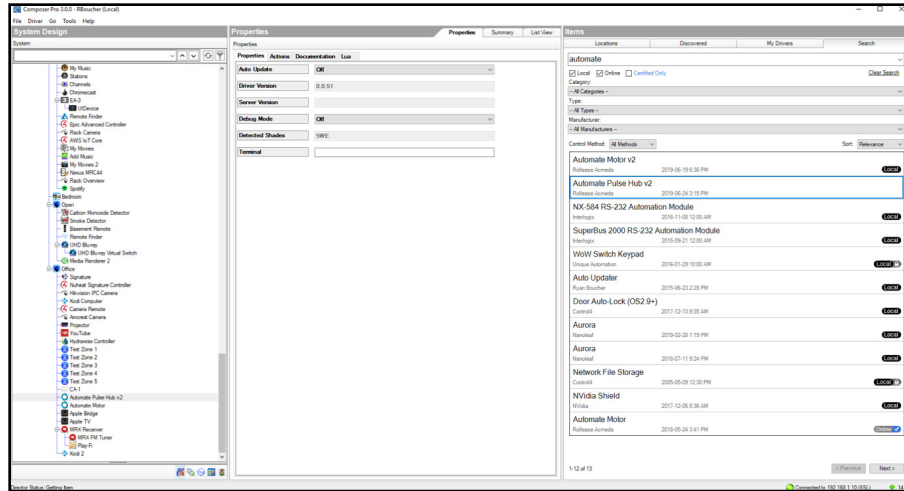
DRIVE INSTALLATION

1. Place the "Automate Pulse Hub" driver into the project.
2. Navigate to the Connections section and select the Network tab.
3. Enter the IP address of the Automate Pulse Hub.
4. Confirm that shades have been detected by looking at the Detected Drivers property.
5. For each shade that the "Automate Pulse Hub" has added to the connections add an "Automate Pulse Shade" driver to the project.
6. Bind the "Automate Pulse Shade" drivers to the "Automate Pulse Hub".
 - A. Once the connection has been bound the driver will automatically populate shade properties.
7. Set the 'Shade Movement Type' to 'Move' or 'Rotate' to determine what the driver should control.
 - A. 'Move' will control basic shade movement.
 - B. 'Rotate' will control the motor rotation.
8. Run the 'Calibrate' action on the shade, this will prepare the driver to calculate the travel times of the shades. By doing this the driver will accurately display ramp rates for a better user experience.
9. Refresh Navigators.

NOTE: Grayed out sections are part of the hub driver installation.

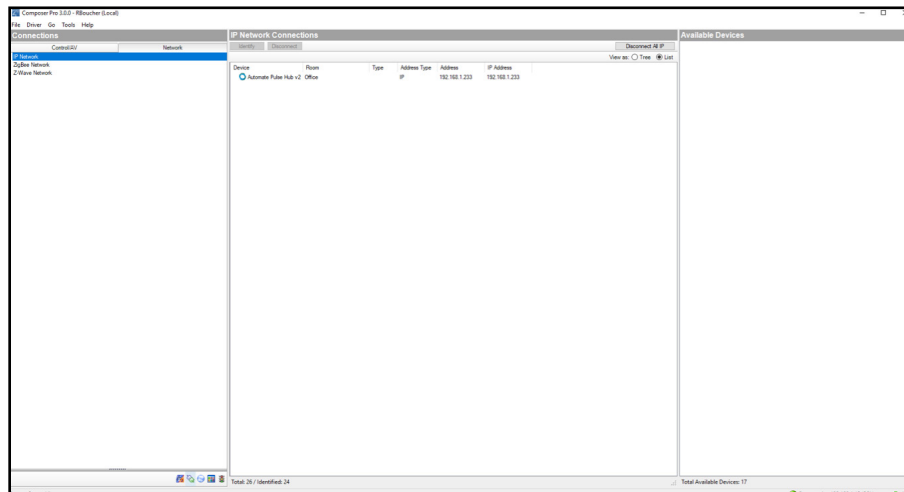
STEP 1

Search the driver via 'Automate Pulse Hub 2' in the right window panel.
Double click to add to a room.



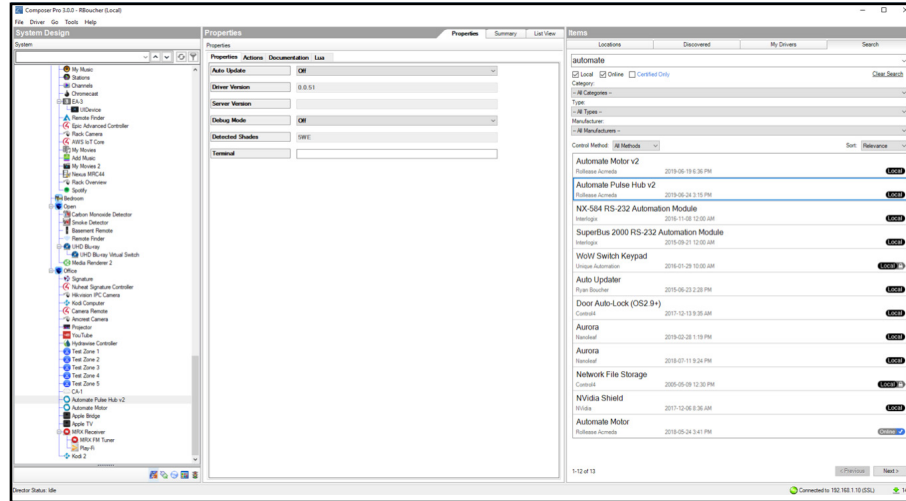
STEP 2

Enter the IP address of the Automate Pulse Hub V2.



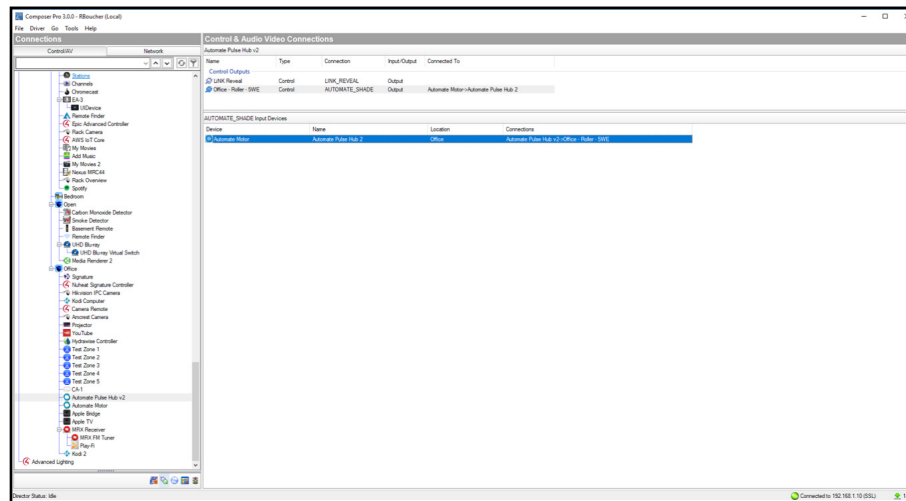
STEP 3

The properties of the driver and discovered shade (5WE).



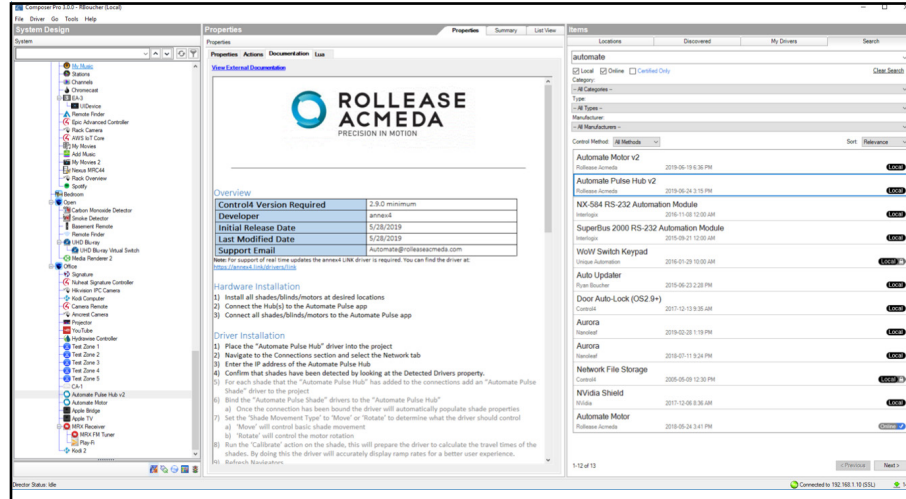
STEP 4

Connect to the shade (5WE) to an 'Automate Motor' endpoint.



STEP 5

Documentation available on the Composer Pro.



SETUP COMPLETE

SUPPORTED FEATURES

- Drag and drop installation
- Easy calibration of shade travel time
- Control of motor rotation and shade movement

PROPERTIES

PROPERTY	DESCRIPTION	
AUTO UPDATE	Enables or disables real time updates of the driver For support of this property the annex4 LiNK driver is required.	
DRIVER VERSION	The current version of the driver.	
SERVER VERSION	The server version of the driver. For support of this property the annex4 LiNK driver is required.	
DEBUG MODE	Reports information to the log and Lua output window.	
	MODES	
	DEBUG	Reports the data being moved around
	TRACE	Reports the flow of the driver
	INFO	Reports important pieces of information
	WARNING	Reports any small issues that arise
	FATAL	Reports issues that cause the driver to fail
SHADE MOVEMENT TYPE	'Move' to control shade movement 'Rotate' to control motor rotation	
SHADE ADDRESS	The address of the shade	
SHADE TYPE	The motor type operating the shade	
SHADE SPEED	The speed in rotations per minute	
REVERSE OPERATION	Reverse the UI level displayed	
OPEN TRAVEL TIME	The time it takes for the shade to go from closed to opened in milliseconds	
CLOSE TRAVEL TIME	The time it takes for the shade to go from opened to closed in milliseconds	
CURRENT MOTOR LEVEL	The current level of the motor, this is the opposite of what is shown in Control4. A motor level of 30 is displayed as 70 in Control4.	
CURRENT UI LEVEL	The current level that Control4 is displaying	

ACTIONS

ACTION NAME	DESCRIPTION
STOP	Stops the shade
JOG	Jogs the shade open
OPEN	Opens the shade
CLOSE	Closes the shade
CALIBRATE	Create bindings for paired shades on the serial connection
IDENTIFY	Moves all other shades to 'Open' and sets this shade to '50' This allows a dealer to quickly identify a shade
GET SHADE INFO	Forces the driver to retrieve the shade information to update properties
UPDATE NOW	Updates the driver to the latest version

CONNECTIONS

CONTROL NAME	CONNECTION TYPE	DESCRIPTION
AUTOMATE PULSE HUB	AUTOMATE_SHADE	The communication binding that lets the shade relay commands to the hub driver
OPEN BUTTON LINK	BUTTON_LINK	Click to open, push to start opening, release to stop
CLOSE BUTTON LINK	BUTTON_LINK	Click to close, push to start closing, release to stop
TOGGLE BUTTON LINK	BUTTON_LINK	Click to toggle, push to start the toggle, release to stop
STOP BUTTON LINK	BUTTON_LINK	Click to stop

SUPPORTED FEATURES

- Simple installation of the hub driver by connecting the network connection.
- Automatically calculates the travel time of the motors accurate to within 50ms.

PROPERTIES

PROPERTY	DESCRIPTION	
AUTO UPDATE	Enables or disables real time updates of the driver For support of this property the annex4 LiNK driver is required.	
DRIVER VERSION	The current version of the driver.	
SERVER VERSION	The server version of the driver. For support of this property the annex4 LiNK driver is required.	
DEBUG MODE	Reports information to the log and Lua output window.	
	MODES	
	DEBUG	Reports the data being moved around
	TRACE	Reports the flow of the driver
	INFO	Reports important pieces of information
	WARNING	Reports any small issues that arise
	ERROR	Reports any large issues that arise
FATAL	Reports issues that cause the driver to fail	
SERIAL NUMBER	The serial number of the hub	
MAC ADDRESS	The mac address of the hub	
DETECTED SHADES	Lists the addresses of all shades discovered on the hub	
TERMINAL	Allows the dealer to manually send commands to the automate hub. Commands should be formatted with a starting "!" and an ending ";" Responses will show in the property shortly after the command is sent	

ACTIONS

ACTION NAME	DESCRIPTION
RETRIEVE SHADES	Create bindings for paired shades on the serial connection.
CLEAR SHADES	Clear the bindings created for shades on the serial connection.
CLOSE ALL	Closes all shades.
OPEN ALL	Opens all shades.
CALIBRATE ALL	Informs each motor endpoint to calibrate its motor travel times.
UPDATE NOW	Updates the driver to the latest version.

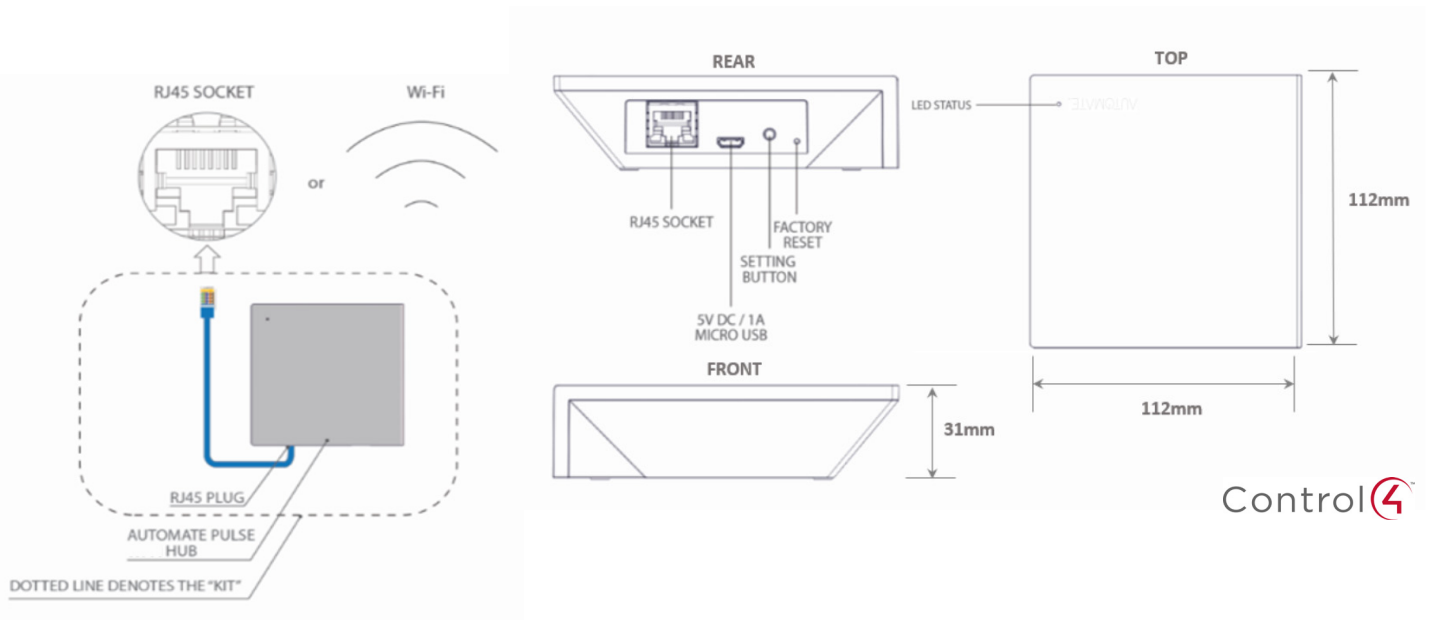
CONNECTIONS

CONTROL NAME	CONNECTION TYPE	DESCRIPTION
<ROOM>:<SHADE>: <ADDRESS>	AUTOMATE_SHADE	The communication binding for a shade endpoint driver
LINK REVEAL	LINK_REVEAL	This connection is used for annex4's notification and display type devices. By using this binding, you can get notifications on display type devices with minimal programming.

COMMON MISTAKES

Entering the wrong IP address in the "IP Address" configuration line.
If you're failing to discover devices double check this.

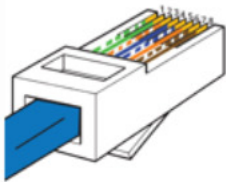
INTEGRATION TOPOLOGY



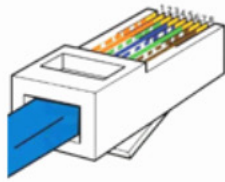
- The CAT 5 cable should be no longer than 100 meters (328ft).
- Router, switch or access point are required to connect the Hub via LAN connection.
- WiFi repeater is required depending on the cover of the WiFi router signal.
- The AUTOMATE PULSE HUB 2 works only with Wi-Fi in 2.4Ghz (not 5Ghz).

CONNECTIONS

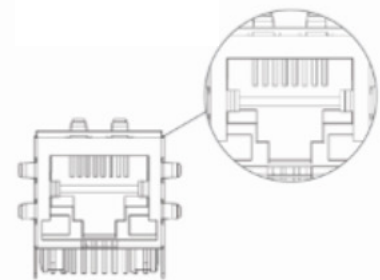
RJ45 PINOUT T-568A



RJ45 PINOUT T-568B



RJ45 SOCKET



- | | |
|-----------------|----------------|
| 1: White | 5: White Blue |
| 2: Green | 6: Orange |
| 3: White Orange | 7: White Brown |
| 4: Blue | 8: Brown |

The standard connections of the Automate Pulse Hub 2 is Ethernet or WiFi. For a LAN connection, you can use a straight through wiring accordingly indicated above.

TROUBLESHOOTING

No hub detected.

Make sure that your hub is connected to the correct network and get an IP Address available and still communicating with the network using the The Shade Store V2 app.

Shade limits are not set properly.

Calibrate shade limits with your remote before setting the appropriate open and close time within AMX system.

Shade is not moving at all.

Make sure the selected hub is the correct hub for the shade to be controlled. Confirm the correct bindings are set in the CONTROL4 System connections tab between the hub and shade drivers.

I have multiple hubs, what do I do?

Load two Automate Pulse Hub 2 drivers. After selecting "Retrieve Hubs" located in the driver actions tab, you will see different hubs - select the desired one.

I don't see any shade bindings in the Pulse Hub 2 driver?

Select "Retrieve Shades" located in the driver actions tab.

How do I scan for available hubs?

Once the hub is properly connected via the Ethernet cable or Wireless network, navigate to the Automate Pulse Hub 2 Properties page within Composer. Select "Retrieve Hubs" located in the driver actions tab.

We get unexpected responses from the CONTROL4 system, or "?" symbols.

Ensure that all connections using the ethernet port or Wi-Fi are working properly. The missed connection has been known to yield unwanted or unexpected results.

SUPPORT RESOURCES:

The Shade Store
800.754.1455
help@theshadestore.com
M-Sat / 9AM - 9PM EST

Rollease Acmeda
800.552.5100
automate@rolleseeacmeda.com
M-F / 9AM - 5PM EST