

RIPPLE FOLD DRAPERY INSTALLATION INSTRUCTIONS

SIMPLY FOLLOW OUR STEP-BY-STEP INSTRUCTIONS AND YOUR BEAUTIFUL NEW DRAPERY WILL SOON BE ENHANCING YOUR HOME OR WORKSPACE FOR MANY YEARS TO COME.

Getting Started:

Please read through all instructions carefully before you begin installation. Carefully remove your new draperies from their packaging. Lay out draperies and determine which is your left and which is your right panel. You will be able to indicate this by looking at the top of the drapery and referring to the following text:

Left Panel:

Will have 2 additional snaps on right side / leading edge of the panel with **NO** pendants pre-snapped on – the 2 snaps are to be snapped to the master carrier of the track.

LEFT



Center Panel:

Will have 2 additional snaps on **BOTH** the left and right side of the panel with **NO** pendants pre-snapped to them – these snaps are to be snapped to the master carriers on the track.

CENTER



Right Panel:

Will have 2 additional snaps on left side / leading edge of the panel with **NO** pendants pre-snapped on – the 2 snaps are to be snapped to the master carrier of the track.

RIGHT



Installing Your Ripple Fold Drapery:

* Note: Drapery track / rail must be installed first (off wall or ceiling) prior to hanging draperies. Please see installation instructions for custom track / rail.

1 Start off by snapping the first 2 buttons on the leading edge of the drapery to the master carrier:



2 Now begin inserting the pendants (that have been pre snapped to the top of drapery) into the carriers – The carriers are pre-strung inside the track and have a slot in them in which the “pendants” will fit.



3 The last snap should be inserted into the stationary carrier in the end cap.



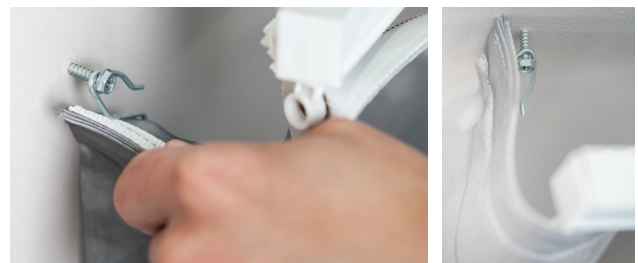
4 Once you have inserted all of the pendants on the drapery into the carriers of the track you must now begin to create “S”-like folds throughout the drapery. Start at the master carrier and begin by pushing the fabric that follows it toward the back of the track. This should be the first two carriers that follow after the master carrier. Now bring the fabric between the next 2 carriers toward the front of the track – the next 2 carriers, push back the fabric, repeat so that you create “S”-like folds throughout as shown below. Front to back, the “S” takes up approximately 4”.



5 Installing returns on the ends of your draperies allows the last fold of the drapery panel to “return” back to the wall. This is ideal especially in areas where you can see your draperies from the side.

Take the last 4” of fabric at the top of the drapery next to the last snap, and simply return the fabric back toward the wall. You may affix the return to the wall by hooking a drapery pin to the back side of the panel and then placing a screw in the wall at the same height. Then attach pin to the screw. This will keep the return in place.

*Does not apply to center panels.



RIPPLE FOLD DRAPERY INSTALLATION INSTRUCTIONS (continued)

SIMPLY FOLLOW OUR STEP-BY-STEP INSTRUCTIONS AND YOUR BEAUTIFUL NEW DRAPERY WILL SOON BE ENHANCING YOUR HOME OR WORKSPACE FOR MANY YEARS TO COME.

Dressing Your Drapery:

Once your draperies are installed, most wrinkles and folds will hang out on their own. You may also use a garment /commercial steamer to help eliminate wrinkles. Please keep in mind linens will characteristically have wrinkles regardless of steaming or pressing.

Note: All of our draperies are hand-pressed prior to shipping, however due to transit, some additional wrinkling may occur. Prior to hanging your draperies you may want to lay them out and press out wrinkles gently with a cool iron.

Care and Cleaning:

If the drapery is dusty, simply vacuum over it using an upholstery attachment. For stubborn stains or overall deep cleaning, professional on-site service is recommended.

Warranty:

The Shade Store products are covered by a limited lifetime warranty. This warranty covers any defects in materials or workmanship so long as the product is measured and installed according to instructions. Every Shade Store window treatment is designed to provide trouble-free use. In the unlikely event that warranty service is ever needed, simply contact the Help Desk at help@theshadestore.com or 800-754-1455 for assistance.